

Orientation Training for RSIF Cohort 3 PhD Scholars

- *icipe*
- PASET-RSIF
- RSIF Research & Innovation Grants
- RSIF PhD Program

Dr Rob Skilton, Head - Capacity Building and Institutional Development, RSIF-RCU, *icipe*

Ms Shira Mukiibi, *Rep.* Research & Innovation Grant Officer, RSIF-RCU, *icipe*

Ms Elizabeth Murimi, Capacity Building Officer, Doctoral Scholarships, RSIF-RCU, *icipe*

The **PASET** Regional Scholarship
and Innovation Fund



An Africa-led initiative to bridge the skills gap in Applied Sciences, Engineering, & Technology



Formation d'orientation pour les doctorants de la cohorte 3 RSIF

icipe

PASET-RSIF

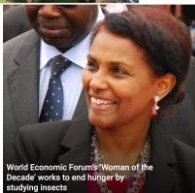
Subventions de recherche et d'innovation

RSIF Programme de doctorat

International Centre of Insect Physiology and Ecology (*icipe*): General Facts



icipe Headquarters, Duduvile
Campus, Kasarani, Nairobi



- A centre of excellence in Africa for Africa for research and capacity building for insect science and its applications.
- Original research on pest and beneficial insects and arthropods.
- Goal: to improve human and livestock health, crop production, ecological systems and well-being of communities.
- 600+ staff (39 nationalities)
- 150+ graduate students annually
- Established in Kenya in 1970 by renowned Kenyan entomologist Prof. Thomas Odhiambo
- Current DG: Dr Segenet Kelemu

Un centre d'excellence en Afrique pour l'Afrique pour la recherche et le renforcement des capacités pour la science des insectes et ses applications.

Recherches originales sur les insectes et arthropodes nuisibles et utiles.

Objectif : améliorer la santé humaine et animale, la production végétale, les systèmes écologiques et le bien-être des communautés.

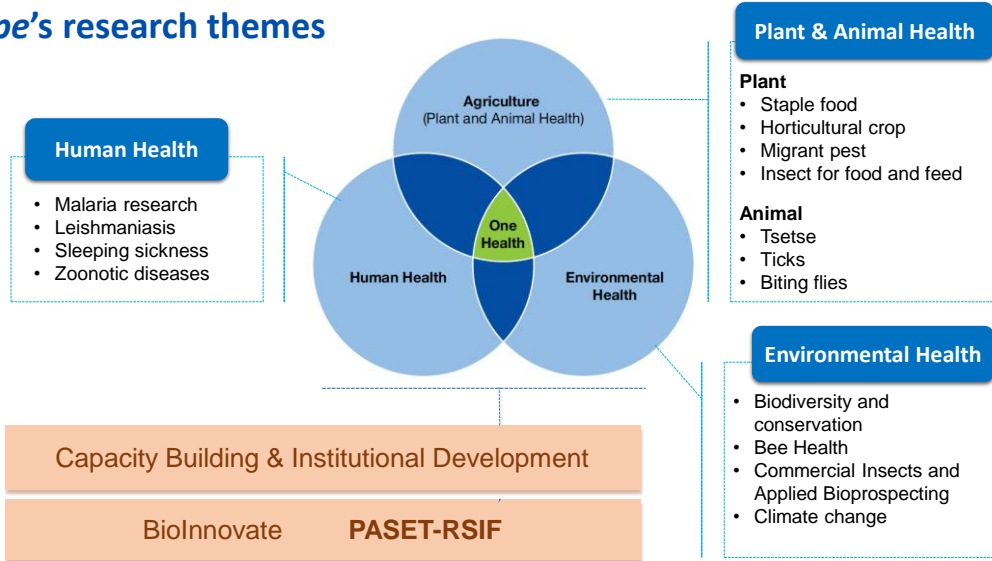
600+ employés (39 nationalités)

150+ étudiants diplômés chaque année

Établi au Kenya en 1970 par le célèbre entomologiste kenyan, le professeur Thomas Odhiambo

DG actuel : Dr Segenet Kelemu

icipe's research themes



Santé humaine

Recherche sur le paludisme

Leishmaniose

Maladie du sommeil

Maladies zoonotiques

Santé des plantes et des animaux

Plante Aliments de base

Culture horticole

Ravageur migrateur

Insecte pour l'alimentation humaine et animale

Animal

Tsé-tsé

Tiques

Les mouches piqueuses

Santé environnementale

Biodiversité et conservation

Santé des abeilles

Insectes commerciaux et bioprospection appliquée

Changement climatique

Renforcement des capacités et développement institutionnel

icipe Capacity Building and Institutional Development: Broad Strategic Framework



Capacity building and professional development of African scientists and professionals
MSc & PhD students, post-doctoral fellows, research interns, visiting scientists



Institutional development by nurturing and strengthening African research and higher education institutions
Universities, Research Organisations, NARS



Promote innovations on insect sciences in collaboration with regional and national programmes, farmers and local communities, and the private sector

Renforcement des capacités et développement professionnel des scientifiques et professionnels africains

Développement institutionnel en soutenant et en renforçant les institutions africaines de recherche et d'enseignement supérieur

Promouvoir les innovations sur les sciences des insectes en collaboration avec les programmes régionaux et nationaux, les agriculteurs et les communautés locales, et le secteur privé



PASET

Partnership for Skills
in Applied Sciences,
Engineering & Technology

- Led by African governments
- World Bank-affiliated initiative
- Launched in 2013 by the governments of Senegal, Ethiopia and Rwanda. The governments of Kenya and Ivory Coast have since entered the partnership and 15 other African governments have made commitments to join PASET.
- Address the critical need to strengthen science and technology capacity for the socio-economic development of SSA.
- Create a Critical Mass of Highly Skilled Science and Technology Professionals in Africa
- Champions a regional approach, complementing individual country efforts.

The PASET Regional Scholarship
and Innovation Fund



An Africa-led initiative to bridge the skills gap in Applied Sciences, Engineering & Technology



- Dirigé par les gouvernements africains
- Initiative affiliée à la Banque mondiale
- Lancé en 2013 par les gouvernements du Sénégal, de l'Éthiopie et du Rwanda.
- Les gouvernements du Kenya et de la Côte d'Ivoire ont depuis rejoint le partenariat et 15 autres gouvernements africains se sont engagés à rejoindre le PASET.
- Répondre au besoin critique de renforcer les capacités scientifiques et technologiques pour le développement socio-économique de l'ASS.
- Créer une masse critique de professionnels hautement qualifiés des sciences et de la technologie en Afrique
- Défend une approche régionale, complétant les efforts de chaque pays.

What is RSIF?

Flagship project of PASET



- Build sustainable doctoral training, and research and innovation ecosystems
- To develop transformative technologies in Africa for economic growth



- Build the capacity of core SSA universities (RSIF African Host Universities) for the benefit of the region



- 5 priority fields of Applied Sciences, Engineering and Technology



- Develop partnerships and networks between Host Universities, international and regional research centres, universities, private sector and industry



- Increase participation of women in PhD programs, research and innovation in ASET fields in SSA

The PASET Regional Scholarship and Innovation Fund



An Africa-led initiative to bridge the skills gap in Applied Sciences, Engineering, & Technology



- Construire des formations doctorales durables, des écosystèmes de recherche et d'innovation
- Développer des technologies transformatrices en Afrique pour la croissance économique
- Renforcer les capacités des principales universités d'Afrique subsaharienne (RSIF African Host Universities) au profit de la région
- 5 domaines prioritaires des Sciences Appliquées, de l'Ingénierie et de la Technologie
- Développer des partenariats et des réseaux entre les universités d'accueil, les centres de recherche internationaux et régionaux, les universités, le secteur privé et l'industrie
- Augmenter la participation des femmes dans les programmes de doctorat, la recherche et l'innovation dans les domaines ASET en Afrique subsaharienne

RSIF supports 5 priority thematic areas



ICTs including big data and artificial intelligence



Food security and agribusiness



Minerals, mining and materials engineering



Energy including renewables



Climate change



The **PASET** Regional Scholarship and Innovation Fund



PASET
Partnership for Africa's
Applied Sciences, Engineering & Technology

An Africa-led initiative to bridge the skills gap in Applied Sciences, Engineering & Technology

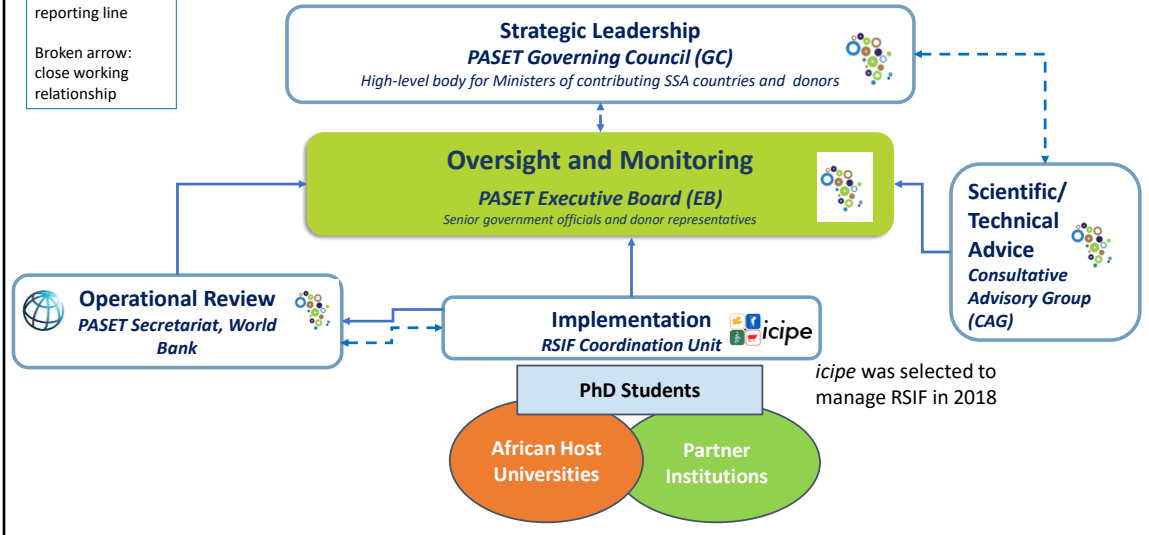


- TIC, y compris les mégadonnées et l'intelligence artificielle
- Sécurité alimentaire et agro-industrie
- Génie des minéraux, des mines et des matériaux
- Énergie, y compris les énergies renouvelables
- Changement climatique

RSIF Governance: Inclusive, Efficient and Transparent

Solid arrow:
reporting line

Broken arrow:
close working
relationship

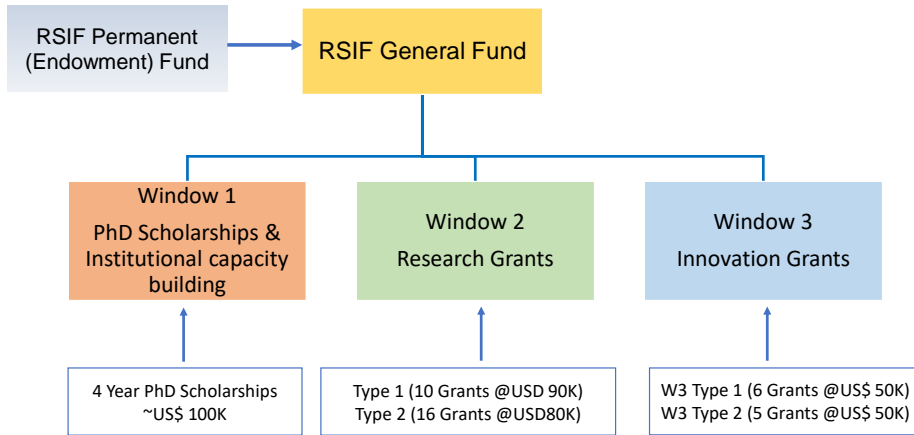


Growing pool of RSIF contributors: Cash and In-Kind



- 9 African Governments
- 2 Multilaterals (World Bank, European Union ACP Innovation Fund implemented by OACPS Secretariat)
- 1 Bilateral Donor (Korea)
- 3 Companies (2 co-financing RSIF grants, Nestlé)
- 1 Foundation (Samsung Dream Foundation)
- 16 Advanced Universities/Institutes (research funds, expertise, waived bench fees for RSIF PhD students)
- 11 African Host Universities (offering favorable tuition costs for RSIF students)

RSIF: Strengthening PhD training, research and innovation



The grants complement PhD training by supporting knowledge generation, scientific excellence, and use of knowledge for development impact

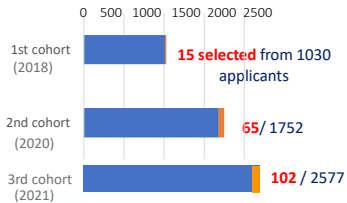
RSIF PhD scholars: Fostering Excellence

- Highly Competitive Selection
- Ongoing Mentoring

- Selective Matching
- High Level of Interaction



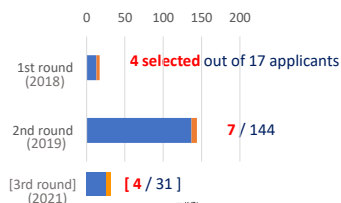
183 PhD Students



- 38% women
- 22 African countries



11 African Host Universities



16 International Partner Institutes/universities



Study in **11 African Host Universities** and **16 International Partner Institutes**

No.	UNIVERSITY	COUNTRY	THEME
1	Nelson Mandela African Institution of Science and Technology *	Tanzania	Mines, Minerals and Materials Engineering
2	Kenyatta University	Kenya	
3	African University of Science and Technology *	Nigeria	
4	University of Ghana	Ghana	Food Security and agribusiness
5	Sokoine University of Agriculture *	Tanzania	
6	University of Port Harcourt *	Nigeria	Energy including renewables
7	University of Nairobi	Kenya	
8	University of Rwanda *	Rwanda	ICT including AI and big data
9	University of Gaston Berger *	Senegal	
10	Bayero University *	Nigeria	Climate Change
11	Université Félix Houphouët-Boigny *	Côte d'Ivoire	

*Africa Centres of Excellence

RSIF African Host Universities



RSIF Capacity Building

1. PhD Student Orientation

2. Cross cutting training courses:

- Science paper writing
- Science communications
- Grant writing
- Responsible conduct of research
- Research management and leadership

- Research methods, statistics & data management
- Information literacy
- Student supervision
- Intellectual property
- Entrepreneurship and research commercialization
- Creating a gender-inclusive educational/research environment
- Understanding corruption to promote academic integrity

3. Additional Capacity Building Activities

- Student and Guest Webinar Series
- Mentorship program
- Library strengthening
- International accreditation

- Training held online
- Involve local trainers
- All training materials to be made available online
- MOOCs to be developed

The PASET Regional Scholarship and Innovation Fund



An Africa-led initiative to bridge the skills gap in Applied Science, Engineering & Technology



1. Orientation des doctorants

2. Formations transversales :

- Rédaction d'articles scientifiques
- Communication scientifique
- Rédaction de subvention
- Conduite responsable de la recherche
- Gestion et direction de la recherche
- Contrôle et évaluation
- Méthodes de recherche, statistiques et gestion des données
- Maîtrise de l'information
- Encadrement des étudiants
- Propriété intellectuelle
- Entrepreneuriat et commercialisation de la recherche
- Créer un environnement éducatif/de recherche inclusif
- Comprendre la corruption pour promouvoir l'intégrité académique

- La formation sera en ligne

- La formation impliquera des formateurs locaux
- Tous les supports de formation seront disponibles en ligne
- Des cours en ligne ouverts et massifs (MOOC) seront développés

3. Activités supplémentaires de renforcement des capacités

- Série de webinaires pour étudiants et invités
- Programme de mentorat
- Renforcement de la bibliothèque
- Accréditation internationale

Communications



New RSIF Website
<https://www.rsif-paset.org/>

RSIF at a glance

- 18th PhD scholarships awarded
- 14 Engineering Research & Innovation Projects
- 23 African host universities

38%
RSIF: An initiative on the rise

In May 2021, the Government of Mozambique signed an agreement with RSIF, for the investment of USD 6 million in the Regional Scholarship and Innovation Fund (RSIF). Hope is the...

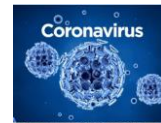
[Read more](#)



My Experience as an RSIF PhD Scholar at the Korea Institute of Science and Technology by Waema Maxwell Wambua



Celebrating #WomenInScience and our first 30 female RSIF PhD Students



Postponement of RSIF Technical Annual Learning Meeting

After reviewing the current prevailing circumstances on the evolving Corona Virus (COVID-19) pandemic and the implications on the health and safety of participants, as well as arranging and potential difficulties...



The **PASET** Regional Scholarship and Innovation Fund



PASET
Partnership for Applied Sciences, Engineering & Technology

An Africa-led initiative to bridge the skills gap in Applied Sciences, Engineering & Technology



Direct Financial support to icipe from:-



The **PASET** Regional Scholarship
and Innovation Fund



PASET
Partnership for Skills
in Applied Sciences,
Engineering & Technology

An Africa-led initiative to bridge the skills gap in Applied Sciences, Engineering, & Technology

For more information contact

Regional Coordination Unit

Regional Scholarship and Innovation Fund

International Centre of Physiology and Ecology (*icipe*)

P.O. Box 30772-00100, Nairobi, Kenya

Tel +254 (20) 8632000



 dg@icipe.org, icipe@icipe.org, rsif@icipe.org

 facebook.com/TheRSIF

 [@pasetrsif](https://twitter.com/pasetrsif)

 linkedin.com/in/PASET-RSIF/