

EXAMPLE

A partnership proposal for our regional development



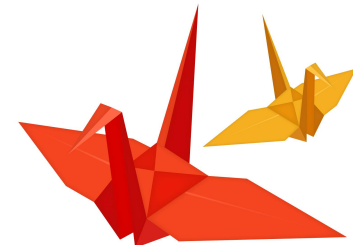
RYO IKO

LEAD COORDINATOR

CRANE INCUBATION CENTER

CRANE UNIVERSITY

REPUBLIC OF CRANE





Our regional issues in the Republic of Crane

Less employment opportunity



Unemployment rate recorded 18% in 2020.

Population outflow of highly educated person (brain drain)



More than 50% university graduates flow out of the city.

Poor infrastructure due to less tax income



More than 80% of road is unpaved.



Examples of our regional challenges in the Republic of Crane

Unavailability of fresh and affordable vegetables (import dependent)



Unavailability of safe and affordable drinking water



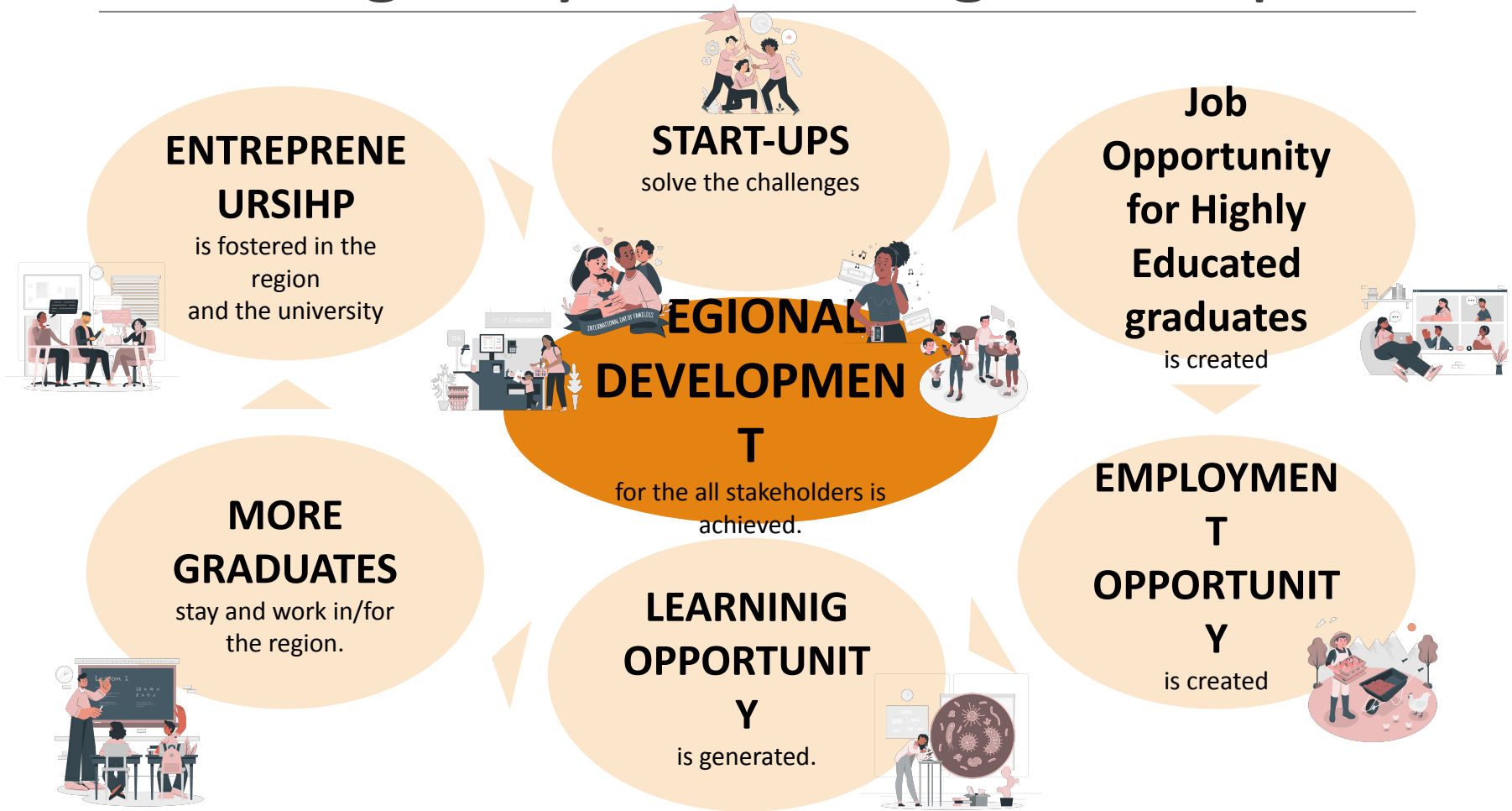
Disease caused by mosquitos



We want to solve these issues by incubating start-ups

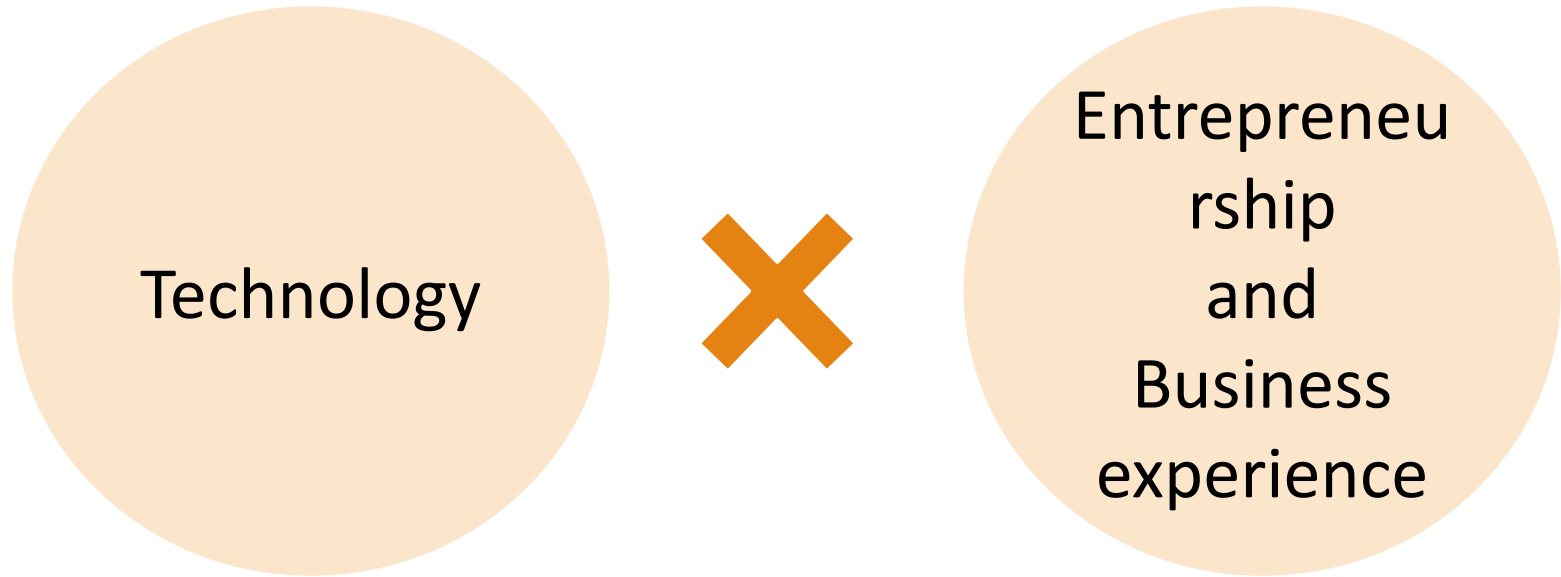


Positive impact of solving regional challenges by incubating start-ups





What is necessary to increase the number of start-ups





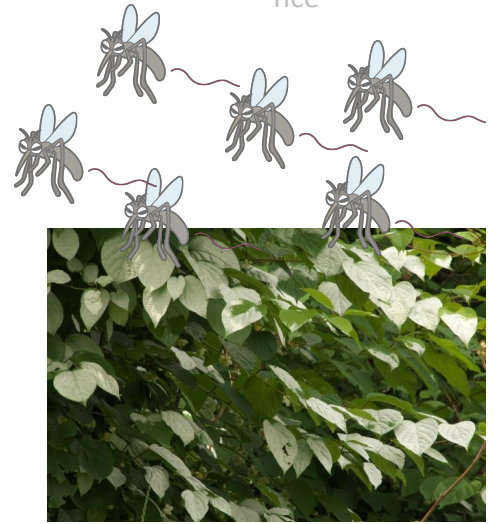
Entrepreneurship and Business experience

Technology

Technology



Entrepreneurship and Business experience





Achievement

Technology



Entrepreneurship and Business experience

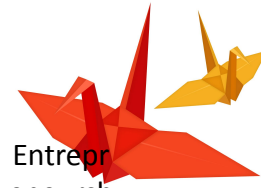


長岡技術科学大学

ちとせ 野川研究所

京都大学

Support the incubator should provide



Technology



Entrepreneurship and Business experience

Entrepreneurship and Business experience

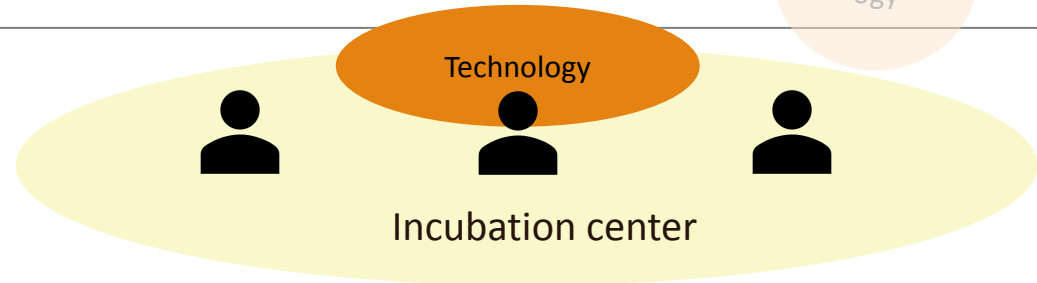


Function of an incubation center



Entrepreneurship and Business experience

Technology



Entrepreneurship and Business experience

Mentoring support

Technical/
Legal support
IP management, Tech transfer etc

Capacity development
Entrepreneurial spirit, Business skills etc.

Funding support

Market opportunity finding

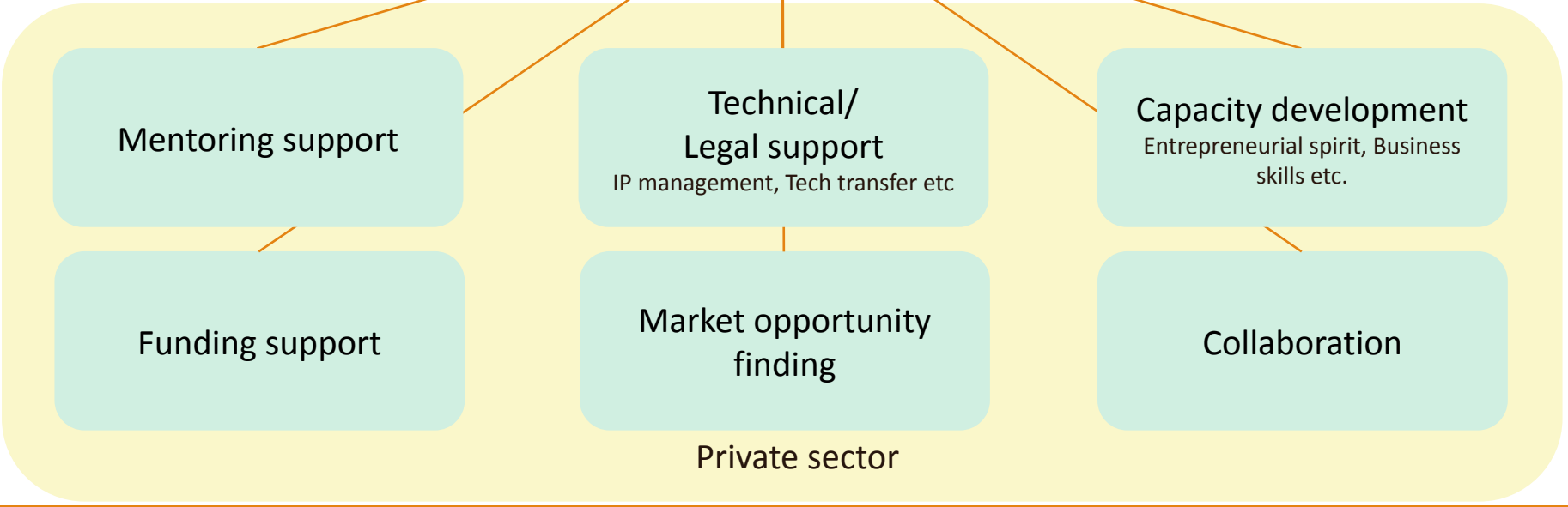
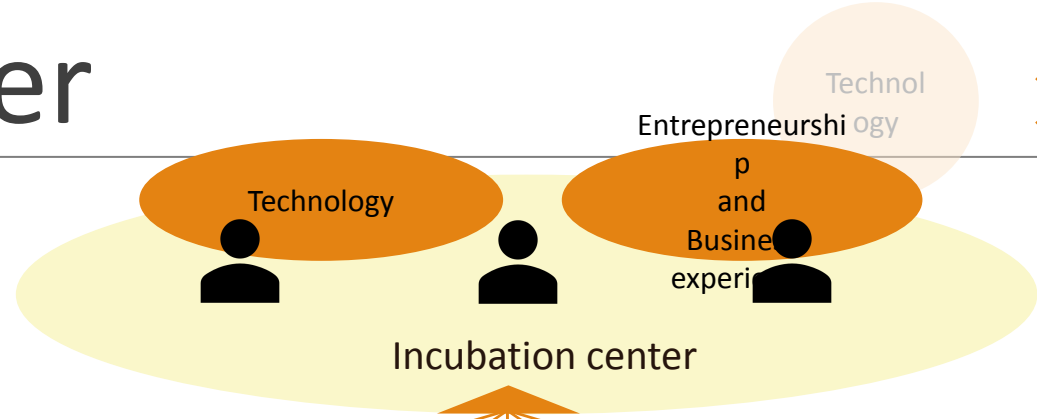
Collaboration

Private sector

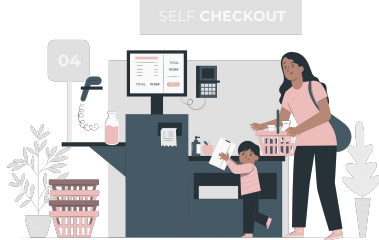
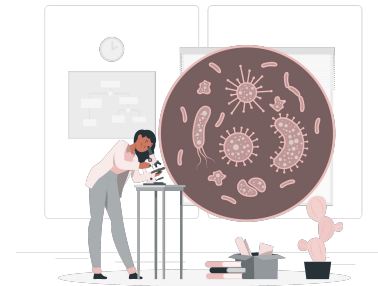
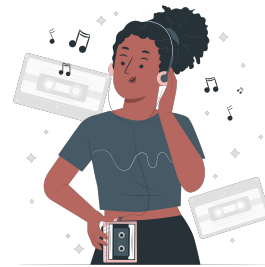
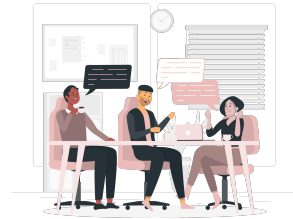
Function of an incubation center



Entrepreneurship and Business experience



Start-ups lead regional development





Our humble request

Mentoring support

Having one-hour weekly meetings for 2 project.
(either online or face to face)

Provide advice for their commercialization of research.

Advice on their presentation material, pitch-deck, business model,
networking, grant application etc.

Mentoring fee: XXX / 1 meeting